



Project Name: **Drake Apartments**

Project type: Historic renovation and adaptive reuse

Address: 406 Howard Street
Carthage, Missouri

Completed: 2005

Description: The Drake Apartments is a historic renovation and adaptive reuse of the original Drake Hotel. Originally constructed in 1920 the hotel provided southwest Missouri with a much anticipated community improvement project. When it was completed the four story building was unsurpassed in the region for the attractiveness of its exterior brick ornamentation and decorative Carthage stone. The many modern conveniences included a full basement and roof top garden. Although continually occupied over the course of its life the Drake Hotel had undergone a number of different uses and alterations. In 2004, SWD Architects conceived a design to adaptively reuse the hotel as senior housing. The design included the historic renovation of the building including removing the second floor infill which had concealed the original two story lobby atrium and skylights. Twenty six new senior housing apartments were created while keeping the original historic appearance of the hotel's common areas. The project played a key role in maintaining the character of the Carthage Courthouse Square National Register District while also providing housing in the downtown area.



Project photos:



Before



After



Before



After



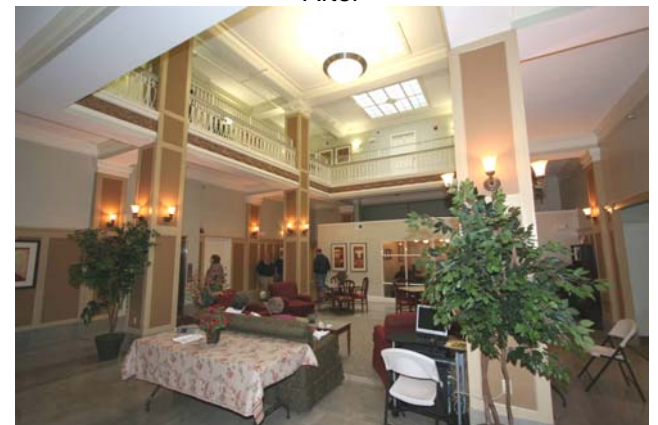
Before



After



Before



After